

3611 WEST LEESTOWN PIKE

74.81 +/- Acres

Woodford County, Midway, Kentucky



Absolutely beautiful 74.81 acres with 1,890 feet of frontage on Leestown Pike (Hwy 421) and 1,424 feet of frontage on Woodlake Road (Hwy 1685) and only minutes from Midway and the I-64 interchange.

Excellent soils, spring water, plus city water.



Offered Exclusively By

PRICE: \$712,500.



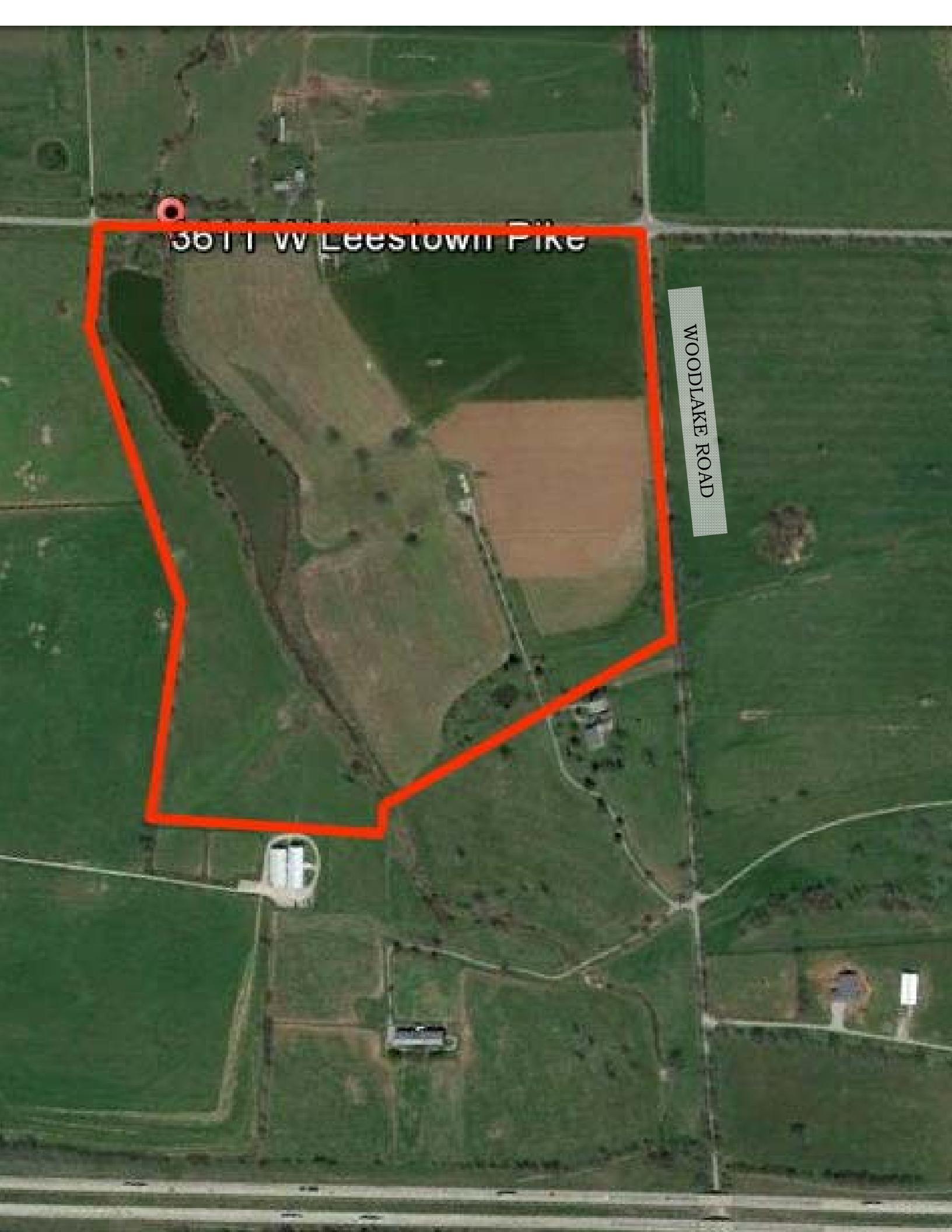
Agent: Bill Justice
859-294-3200

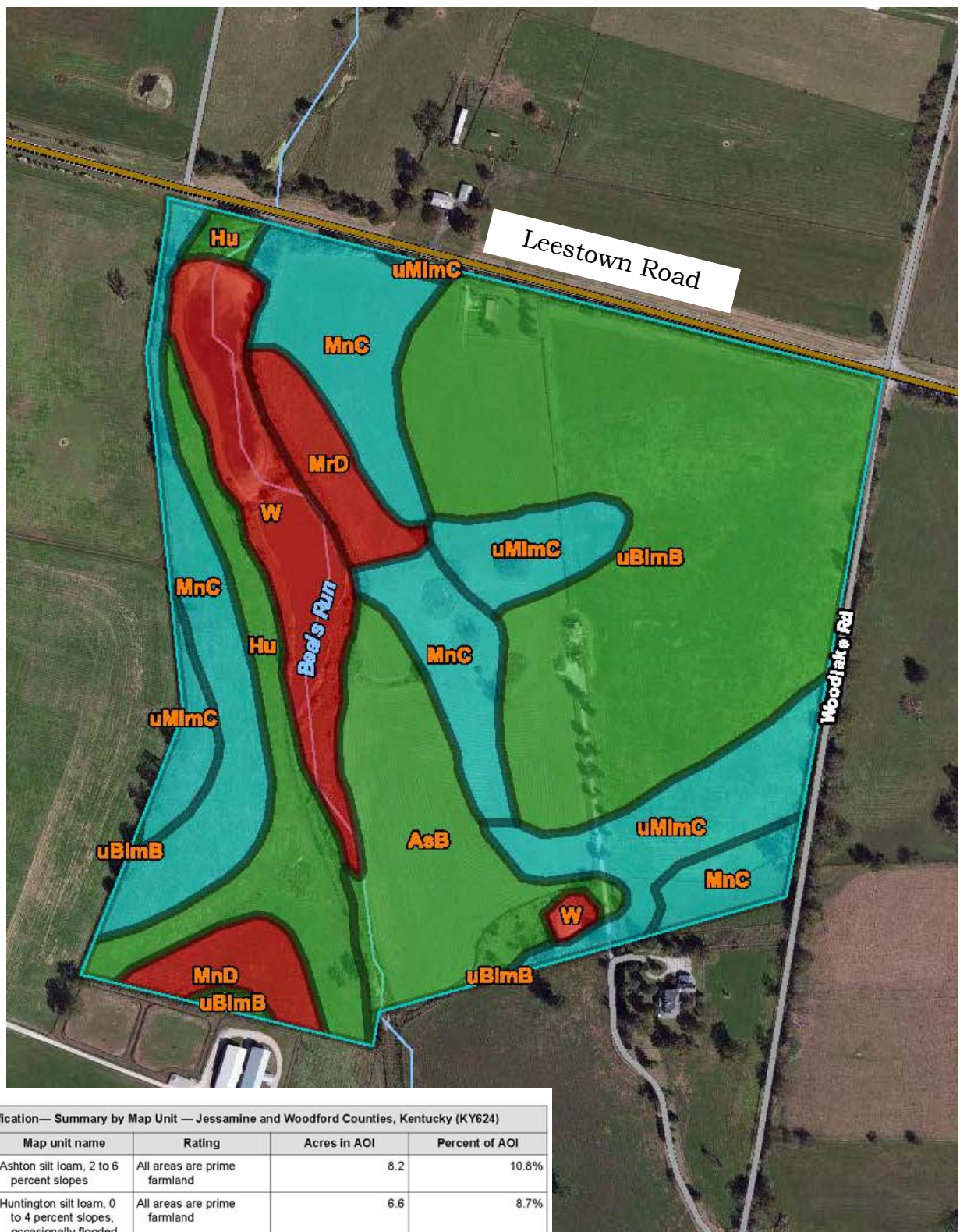
www.kyhorsefarms.com

518 East Main Street ♦ Lexington, Kentucky 40508 ♦ (859) 255-3657

3611 W Leestown PIKE

WOODLAKE ROAD





Farmland Classification— Summary by Map Unit — Jessamine and Woodford Counties, Kentucky (KY624)

| Map unit symbol | Map unit name | Rating | Acres in AOI | Percent of AOI |
|------------------------------------|---|----------------------------------|--------------|----------------|
| AsB | Ashton silt loam, 2 to 6 percent slopes | All areas are prime farmland | 8.2 | 10.8% |
| Hu | Huntington silt loam, 0 to 4 percent slopes, occasionally flooded | All areas are prime farmland | 6.6 | 8.7% |
| MnC | McAfee silt loam, 6 to 12 percent slopes | Farmland of statewide importance | 14.8 | 19.3% |
| MnD | McAfee silt loam, 12 to 20 percent slopes | Not prime farmland | 1.9 | 2.5% |
| MrD | McAfee-Rock outcrop complex, 6 to 20 percent slopes | Not prime farmland | 2.3 | 3.1% |
| uBlmB | Bluegrass-Maury silt loams, 2 to 6 percent slopes | All areas are prime farmland | 27.4 | 35.8% |
| uMImC | Maury-Bluegrass silt loams, 6 to 12 percent slopes | Farmland of statewide importance | 8.5 | 11.1% |
| W | Water | Not prime farmland | 6.6 | 8.7% |
| Totals for Area of Interest | | | 76.4 | 100.0% |