

# 3611 WEST LEESTOWN PIKE

74.81 +/- Acres

Woodford County, Midway, Kentucky



Absolutely beautiful 74.81 acres with 1,890 feet of frontage on Leestown Pike (Hwy 421) and 1,424 feet of frontage on Woodlake Road (Hwy 1685) and only minutes from Midway and the I-64 interchange.

Excellent soils, spring water, plus city water.



*Offered Exclusively By*

**PRICE: \$712,500.**



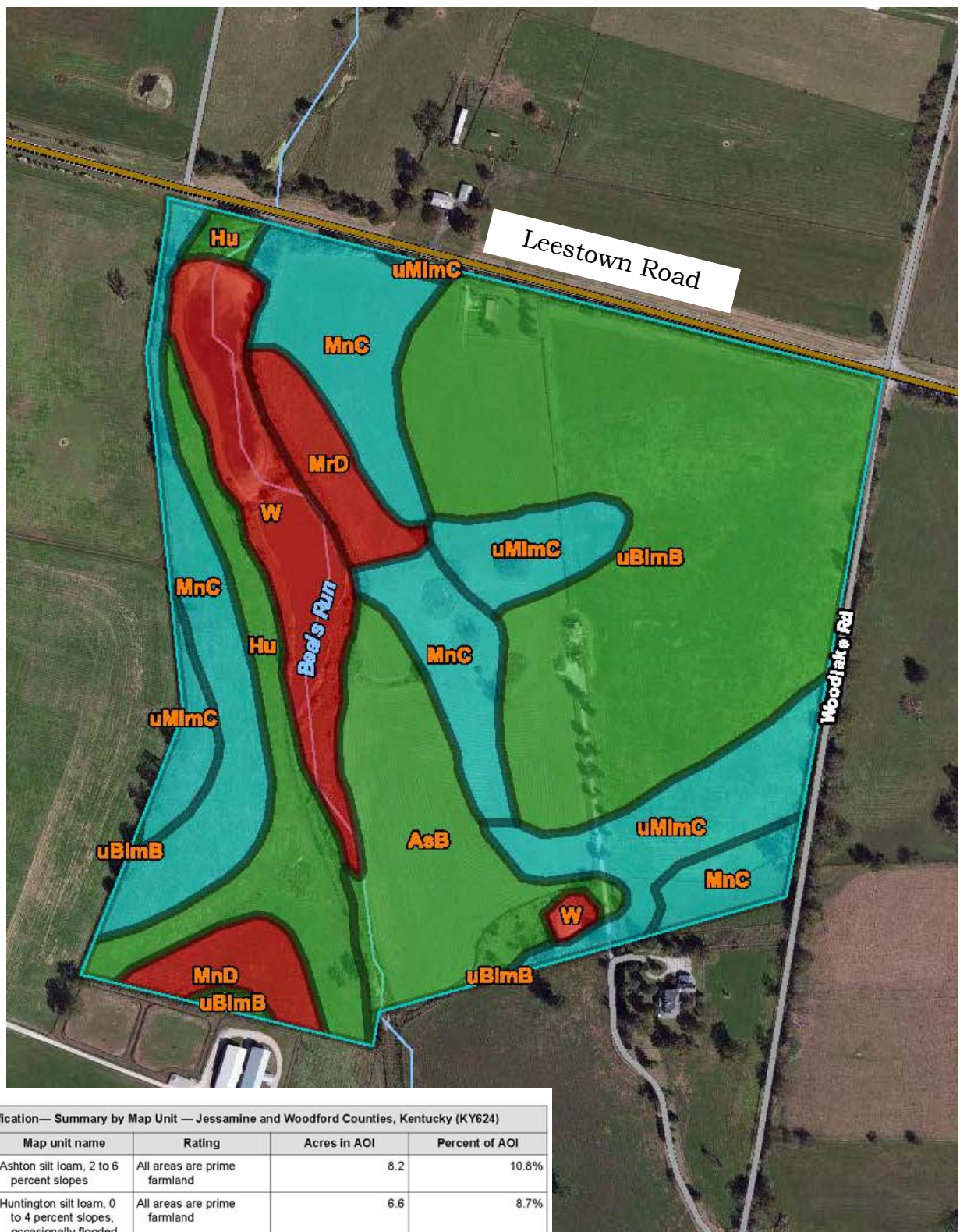
**Agent: Bill Justice**  
**859-294-3200**

[www.kyhorsefarms.com](http://www.kyhorsefarms.com)

518 East Main Street ♦ Lexington, Kentucky 40508 ♦ (859) 255-3657







Farmland Classification— Summary by Map Unit — Jessamine and Woodford Counties, Kentucky (KY624)

Map unit symbol	Map unit name	Rating	Acres in AOI	Percent of AOI
AsB	Ashton silt loam, 2 to 6 percent slopes	All areas are prime farmland	8.2	10.8%
Hu	Huntington silt loam, 0 to 4 percent slopes, occasionally flooded	All areas are prime farmland	6.6	8.7%
MnC	McAfee silt loam, 6 to 12 percent slopes	Farmland of statewide importance	14.8	19.3%
MnD	McAfee silt loam, 12 to 20 percent slopes	Not prime farmland	1.9	2.5%
MrD	McAfee-Rock outcrop complex, 6 to 20 percent slopes	Not prime farmland	2.3	3.1%
uBlmB	Bluegrass-Maury silt loams, 2 to 6 percent slopes	All areas are prime farmland	27.4	35.8%
uMImC	Maury-Bluegrass silt loams, 6 to 12 percent slopes	Farmland of statewide importance	8.5	11.1%
W	Water	Not prime farmland	6.6	8.7%
<b>Totals for Area of Interest</b>			<b>76.4</b>	<b>100.0%</b>