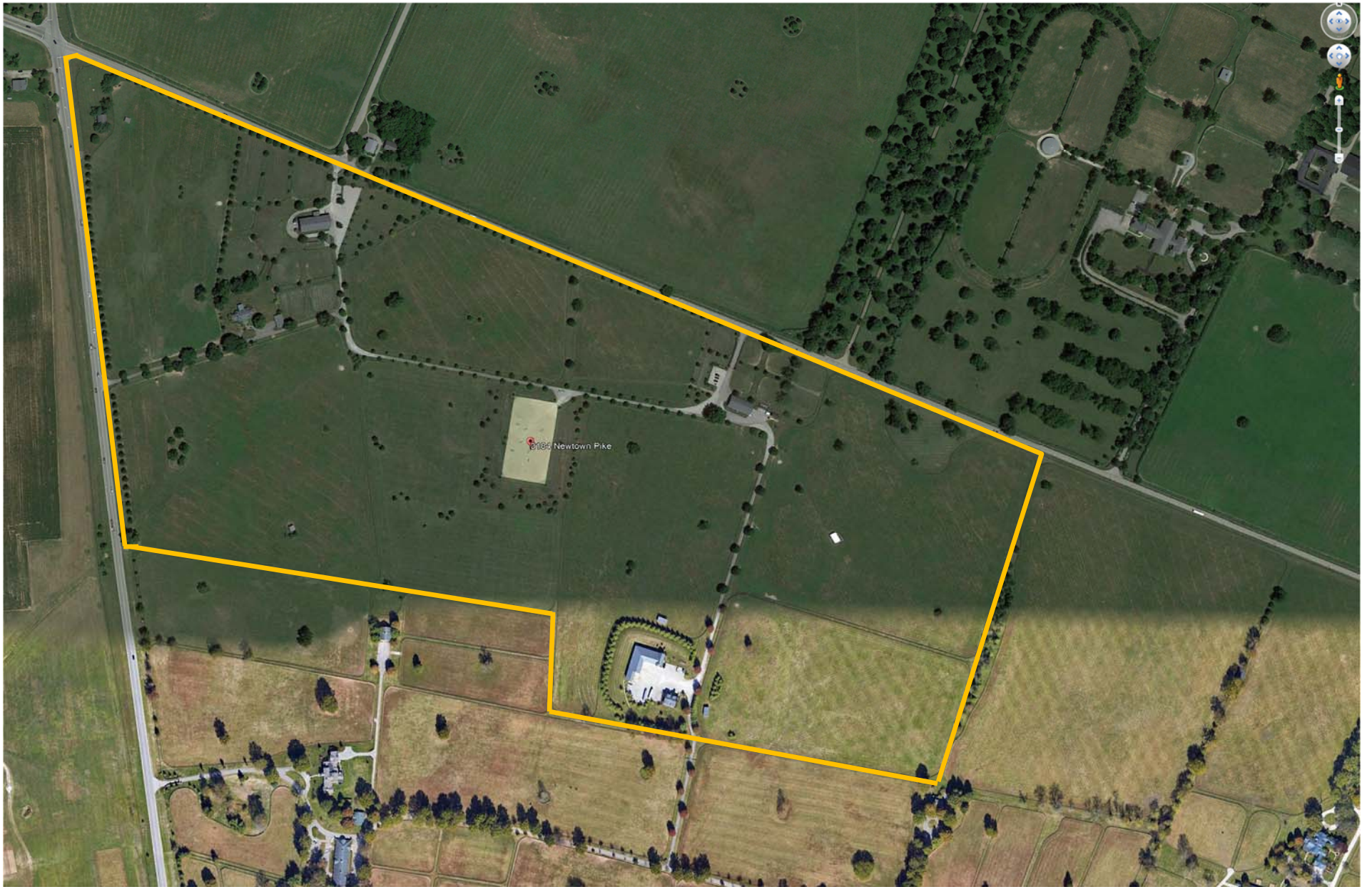
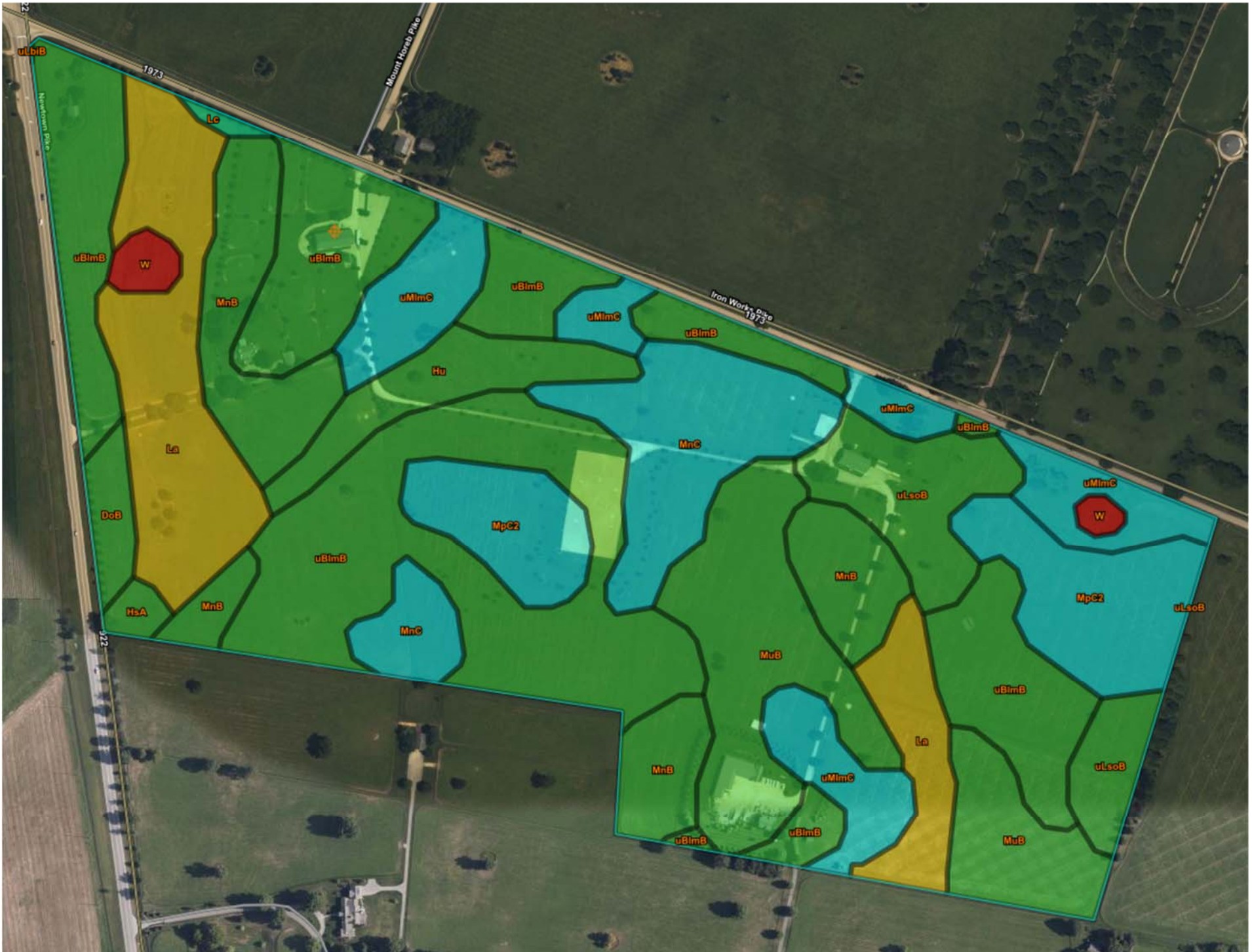


3184 Newtown Pike





Tables — Farmland Classification — Summary By Map Unit

Summary by Map Unit — Fayette County Area, Part of Fayette County, Kentucky (KY643)

Summary by Map Unit — Fayette County Area, Part of Fayette County, Kentucky (KY643)

Map unit symbol	Map unit name	Rating	Acres in AOI	Percent of AOI
DoB	Donerail silt loam, 2 to 6 percent slopes	All areas are prime farmland	1.3	1.2%
HsA	Huntington silt loam, 0 to 2 percent slopes, clayey substratum, occasionally flooded	All areas are prime farmland	0.6	0.5%
Hu	Huntington silt loam, 0 to 4 percent slopes, occasionally flooded	All areas are prime farmland	3.8	3.4%
La	Lanton silty clay loam (dunning)	Prime farmland if drained and either protected from flooding or not frequently flooded during the growing season	12.5	11.4%
Lc	Lawrence silt loam, 0 to 2 percent slopes, rarely flooded	Prime farmland if drained	0.3	0.2%
MnB	McAfee silt loam, 2 to 6 percent slopes	All areas are prime farmland	10.7	9.7%
MnC	McAfee silt loam, 6 to 12 percent slopes	Farmland of statewide importance	9.0	8.1%
MpC2	McAfee silty clay loam, 6 to 12 percent slopes, eroded	Farmland of statewide importance	9.2	8.3%
MuB	Mercer silt loam, 2 to 6 percent slopes	All areas are prime farmland	12.2	11.0%
uBlmB	Bluegrass-Maury silt loams, 2 to 6 percent slopes	All areas are prime farmland	33.8	30.6%
uLbiB	Lowell-Bluegrass silt loams, 2 to 6 percent slopes	All areas are prime farmland	0.0	0.0%
uLsoB	Lowell-Sandview silt loams, 2 to 6 percent slopes	All areas are prime farmland	6.4	5.8%
uMlmC	Maury-Bluegrass silt loams, 6 to 12 percent slopes	Farmland of statewide importance	9.6	8.7%
W	Water	Not prime farmland	1.0	0.9%
Totals for Area of Interest			110.3	100.0%