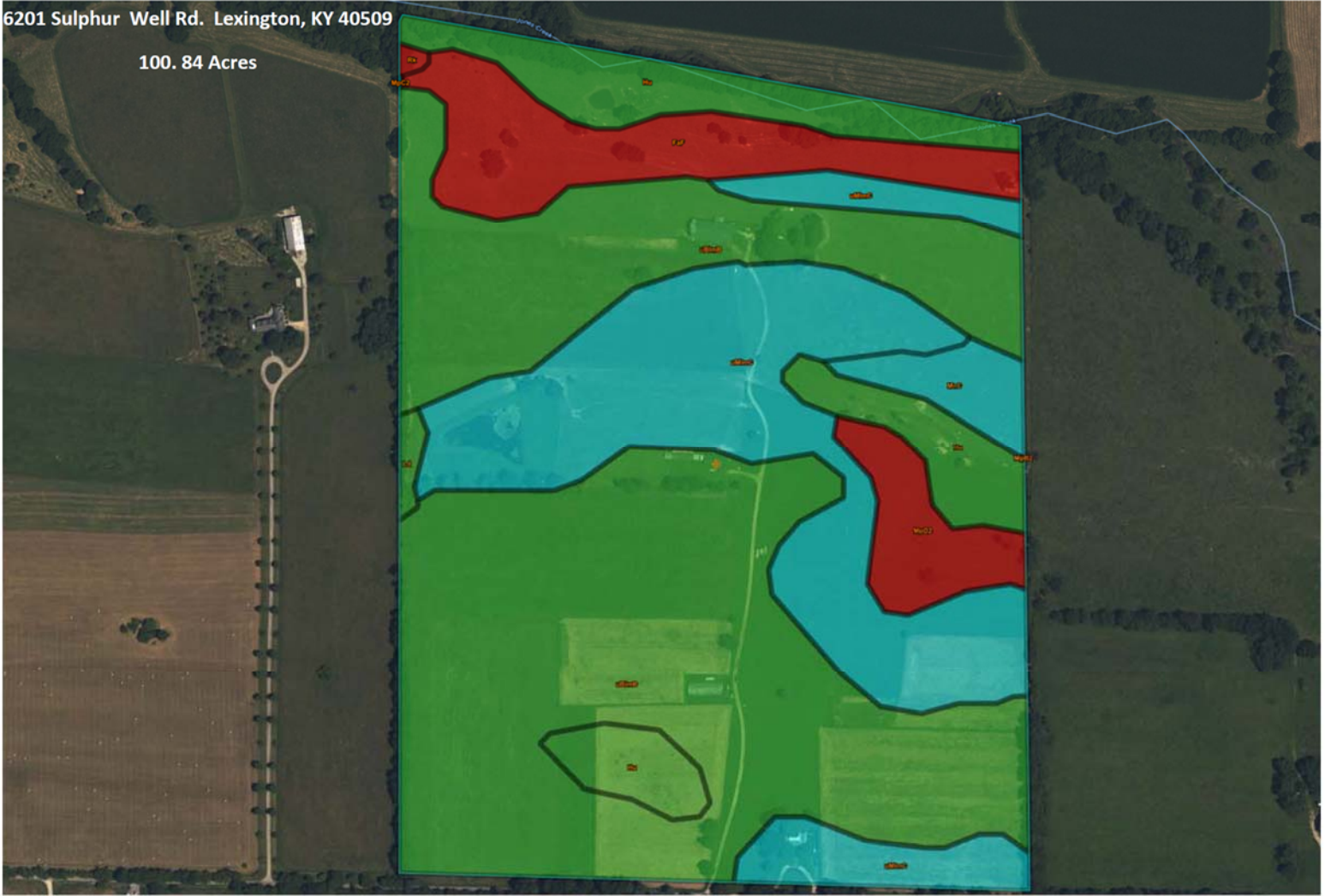




6201 Sulphur Well Rd. Lexington, KY 40509

100.84 Acres



Tables -- Farmland Classification -- Summary By Map Unit

Summary by Map Unit -- Fayette County Area, Part of Fayette County, Kentucky (KY643)

Summary by Map Unit -- Fayette County Area, Part of Fayette County, Kentucky (KY643)

Map unit symbol	Map unit name	Rating	Acres in AOI	Percent of AOI
FaF	Fairmount very rocky silty clay loam, 20 to 50 percent slopes (fairmount-Rock outcrop complex)	Not prime farmland	8.1	8.1%
Hu	Huntington silt loam, 0 to 4 percent slopes, occasionally flooded	All areas are prime farmland	10.4	10.3%
Ld	Lindside silt loam, 0 to 2 percent slopes, occasionally flooded	All areas are prime farmland	0.4	0.4%
MnC	McAfee silt loam, 6 to 12 percent slopes	Farmland of statewide importance	2.1	2.1%
MpB2	McAfee silty clay loam, 2 to 6 percent slopes, eroded	All areas are prime farmland	0.0	0.0%
MpC2	McAfee silty clay loam, 6 to 12 percent slopes, eroded	Farmland of statewide importance	0.0	0.0%
MpD2	McAfee silty clay loam, 12 to 20 percent slopes, eroded	Not prime farmland	3.4	3.4%
Rk	Rock land (rock outcrop-fairmount complex, 20 to 50 percent slopes)	Not prime farmland	0.1	0.1%
uBlmB	Bluegrass-Maury silt loams, 2 to 6 percent slopes	All areas are prime farmland	50.8	50.8%
uMimC	Maury-Bluegrass silt loams, 6 to 12 percent slopes	Farmland of statewide importance	24.6	24.6%
Totals for Area of Interest			100.0	100.0%