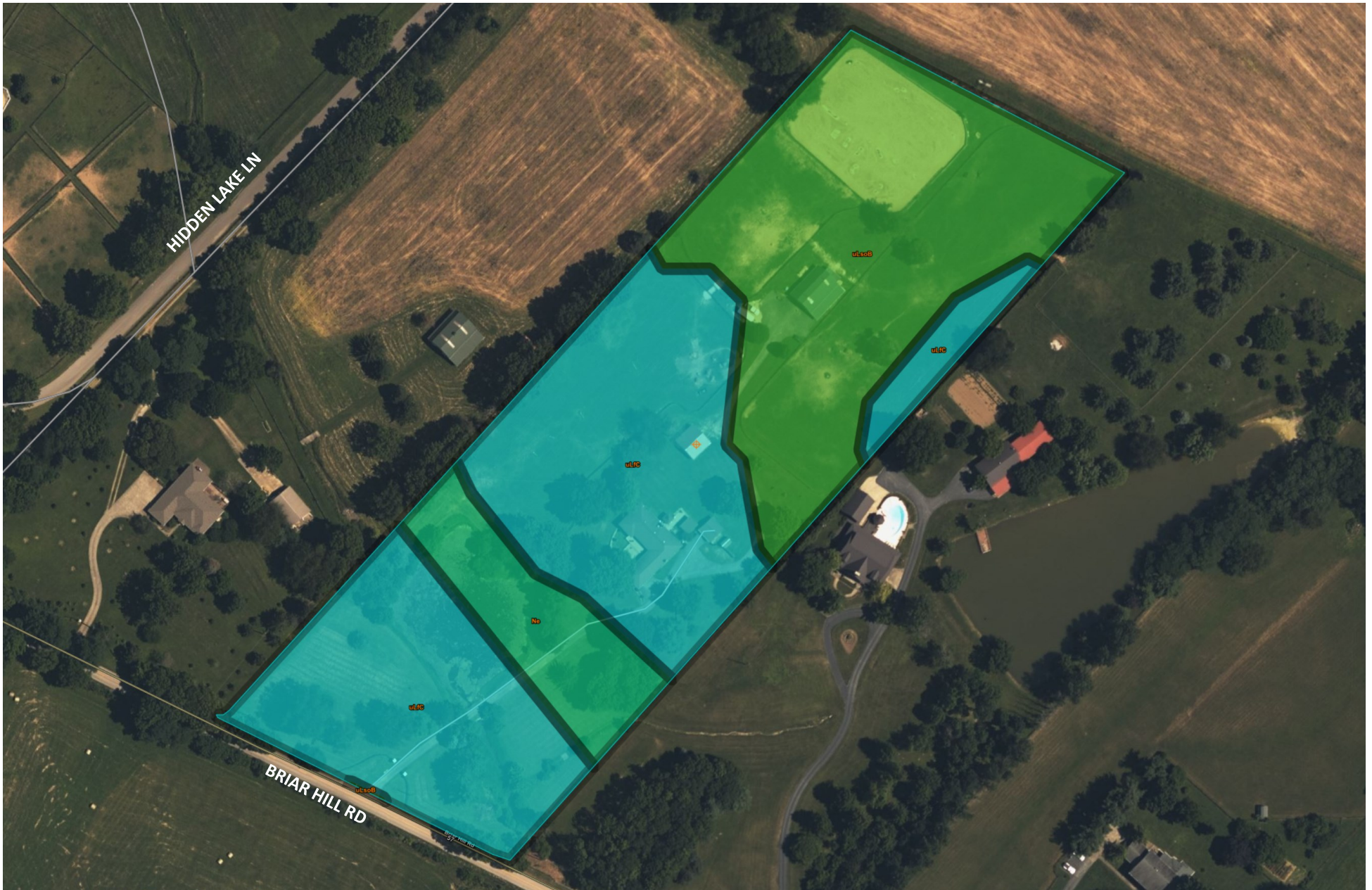


3911 Briar Hill Road, Lexington, KY 40516





Tables — Farmland Classification — Summary By Map Unit

Summary by Map Unit — Fayette County Area, Part of Fayette County, Kentucky (KY643)				
Map unit symbol	Map unit name	Rating	Acres in AOI	Percent of AOI
Ne	Newark silt loam, 0 to 2 percent slopes, occasionally flooded	Prime farmland if drained	1.0	9.9%
uLFC	Lowell-Faywood silt loams, 6 to 12 percent slopes	Farmland of statewide importance	5.3	51.8%
uLSoB	Lowell-Sandview silt loams, 2 to 6 percent slopes	All areas are prime farmland	3.9	38.2%
Totals for Area of Interest			10.1	100.0%