

HICKORY BROOK FARM

690 Ruddles Mill Road

Bourbon County, Kentucky

226 +/- Acres



Absolutely beautiful farm land in excellent condition. Would develop into a wonderful horse farm. Nice 4 bedroom/2 bath home with approximately 2,260 square feet of living area. Two new metal barns (60' x 100' and 45' x 80'), 34' x 99' equipment building (formerly a greenhouse), and a 5 bent tobacco barn. Well-soiled farm with city water and great tree-lined breaks between fields.



OFFERED EXCLUSIVELY BY



PRICE: \$1,175,000.

**Agent: Bill Justice
(859) 294-3200**


www.kyhorsefarms.com

518 East Main Street ♦ Lexington, Kentucky 40508 ♦ (859) 255-3657



Legend

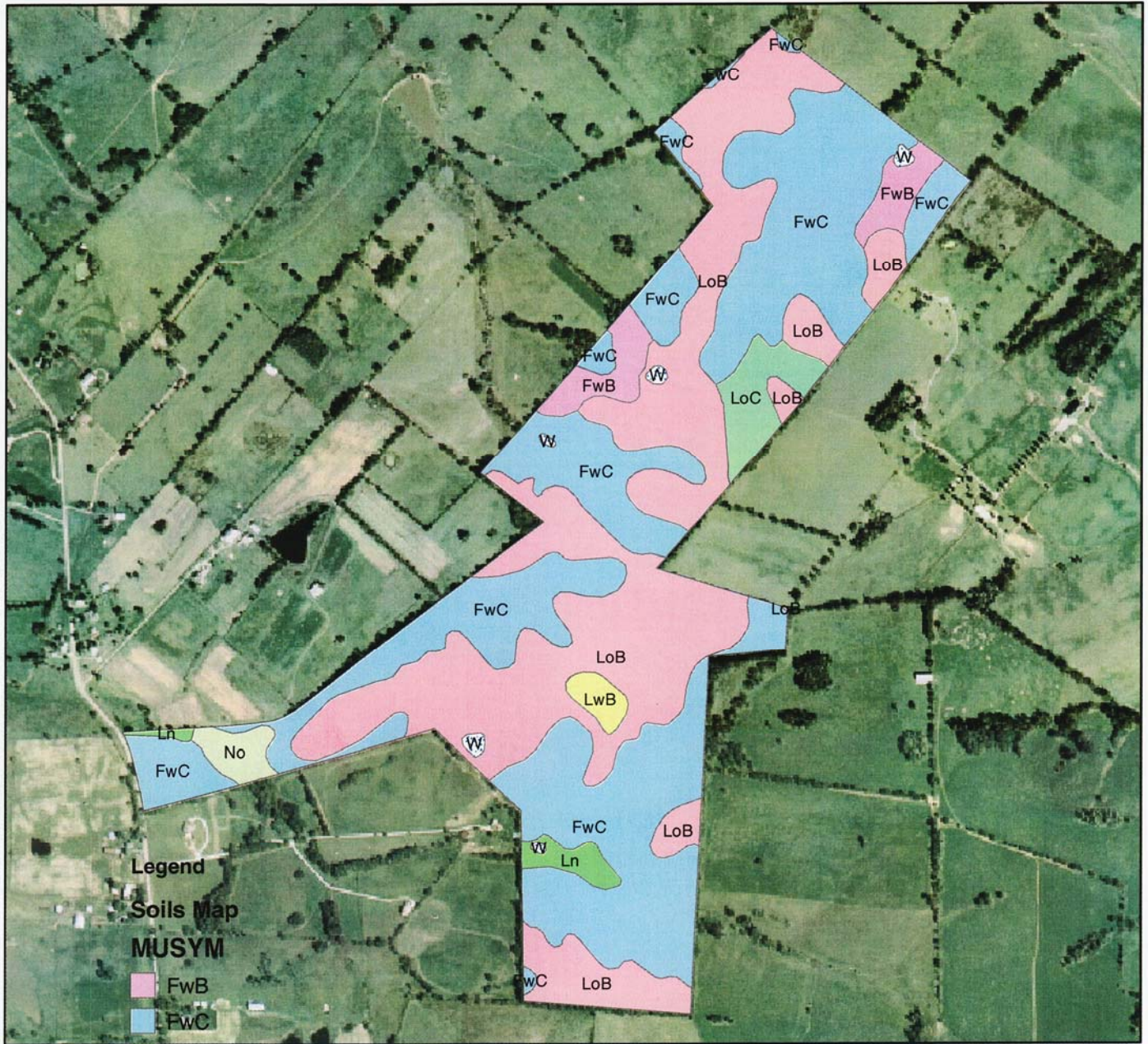
 Consplan5

 Primary_Roads

 County_Boundary

Image: drg_s_ky017.sid





Legend

Soils Map

MUSYM

FwB

FwC

Ln

LoB

LoC

LwB

MaB

No

W



Image: drg_s_ky017.sid

490 0 490 980 1,470 1,960 Feet

