

115 HIDDEN CREEK DRIVE

25 +/- Acres

Georgetown, Scott County, Kentucky



Located on the prestigious Iron Works Rd. just minutes from Midway, Georgetown and the Kentucky Horse Park, this 25.486 acre parcel offers the benefits of a terrific location, lush fields, mature trees, the Elkhorn Creek nearby and a beautiful landscape to build your dream home and horse property. Part of Hidden Creek Estates.

Offered Exclusively By

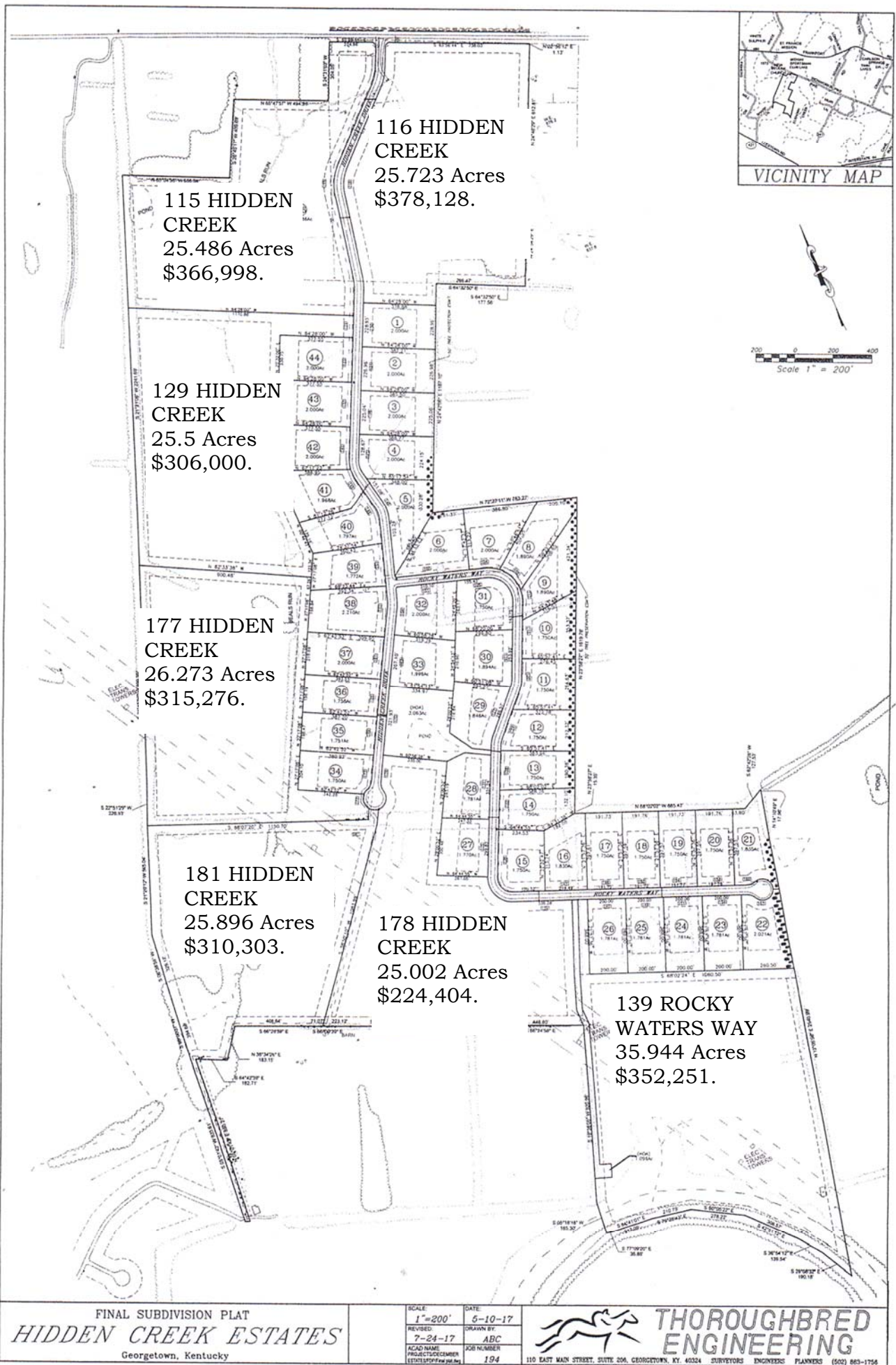
PRICE: \$366,998.



**Bill Justice
859-255-3657**

www.kyhorsefarms.com

518 East Main Street • Lexington, Kentucky 40508 • (859) 255-3657



FINAL SUBDIVISION PLAT
HIDDEN CREEK ESTATES
 Georgetown, Kentucky

SCALE: 1"=200'
 DATE: 5-10-17
 REVISED: 7-24-17
 DRAWN BY: ABC
 ACAD NAME: PROJECTS/ENGINEER
 JOB NUMBER: 194
 ESTIMATE/PLAT/POST/REG.



**THOROUGHbred
 ENGINEERING**

110 EAST MAIN STREET, SUITE 206, GEORGETOWN, KY, 40324 SURVEYORS ENGINEERS PLANNERS (502) 863-1756



