

# FAIRYHOUSE HALL

13 Acres

3250 Delong Road

Lexington, Fayette County, Kentucky



Offered Exclusively By



[www.kyhorsefarms.com](http://www.kyhorsefarms.com)

518 East Main Street • Lexington, Kentucky 40508 • (859) 255-3657



A Georgian inspired estate nestled on 13 gorgeous acres between world renowned Juddmonte and Overbrook Farms. Fairyhouse Hall offers the ambience of a 19th century historic residence with the luxury and amenities of newer construction.

Carefully planned with true proportion, every space is truly a room with a view. This Georgian style home with approximately 6900 square feet of magnificent living space features tall ceiling, dramatic wood floors, gourmet kitchen, marble and granite tops, and Charleston style French doors. You will discover a wonderful traffic pattern in this 6 bedroom, 6 1/2 bath home.

The stone walls around the entrance, the formal garden, and the French gravel courtyard were meticulously constructed by Drystone Conservancy using limestone salvaged from Lexington's 1910 First Baptist Church.

Located on one of the most desirable roads in all of central Kentucky, Fairyhouse Hall embodies true town and country living.





**Entry**

- 2 story
- Herringbone Oak floor



**Dining Room**

- Herringbone Oak Floor
- 2 sets of French doors
- Wainscoting



**Living Room**

- 2 sets of French doors
- Oak floor
- Stone fireplace
- Built in cabinets on both sides of fireplace
- Large crown molding





### Kitchen

- Large eat in kitchen
- Granite island countertop
- Propane cook top
- Double oven
- Sub-Zero refrigerator
- Oak floor
- Pantry



Renovated and expanded in 2007

### Butler's Kitchen

- Terracotta floor
- Granite countertops
- Farmhouse sink



### Living Room

- Oak floor
- Coffered wood ceiling
- Murphy bed
- Fireplace



### Bathroom

- Oak floor
- Red cedar shower



### Powder Room

- Oak floor





### Bedroom

- Oak floor
- Crown molding
- 2 Sets of double windows
- En-suite bathroom

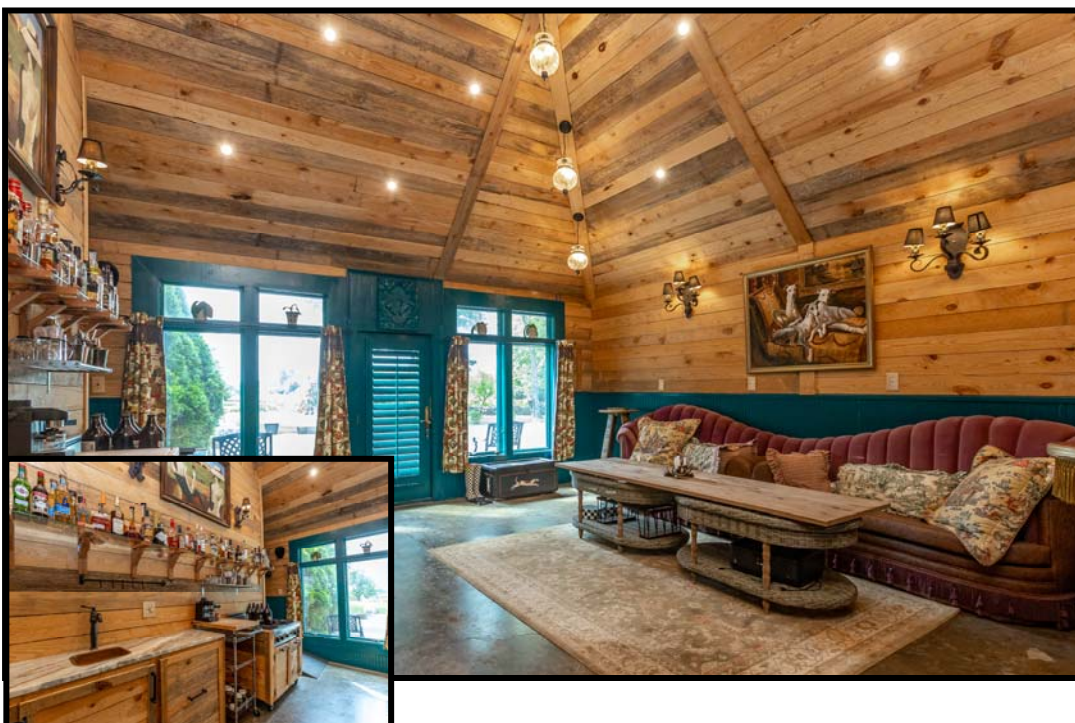
### Bathroom

- Marble floor
- Double sinks
- Marble tops
- Crown molding



### Tasting Room

Constructed in 2019



- Cathedral ceiling
- Wood ceilings & walls
- Concrete floor
- Viking stove



## Second Floor



### Primary Suite

- Oak floor
- Crown molding
- Door to outside covered porch
- Full bath with whirlpool tub, travertine, and crown molding, full tiled shower



### Closet

- Walk in closet
- Windows
- Oak floor
- Window seats
- Built in's



**Bedroom**

- Oak floor
- 12' ceilings
- Adjacent full bath with tile floor and surround with a marble sink top
- Crown molding



**Bedroom**

- Oak floor
- 12' ceilings
- Adjacent full bath with tiled shower & wall







## Bedroom

- Oak floor
- Crown molding
- Walk in closet
- Adjacent full bath with tiled tub/whirlpool, tiled floor



## Utility Room

- Washer & dryer hookup
- Oak floor
- Marble sink top



## Third Floor

- Bedroom
- Carpet





**PRICE: \$2,100,000.**



[www.kyhorsefarms.com](http://www.kyhorsefarms.com)

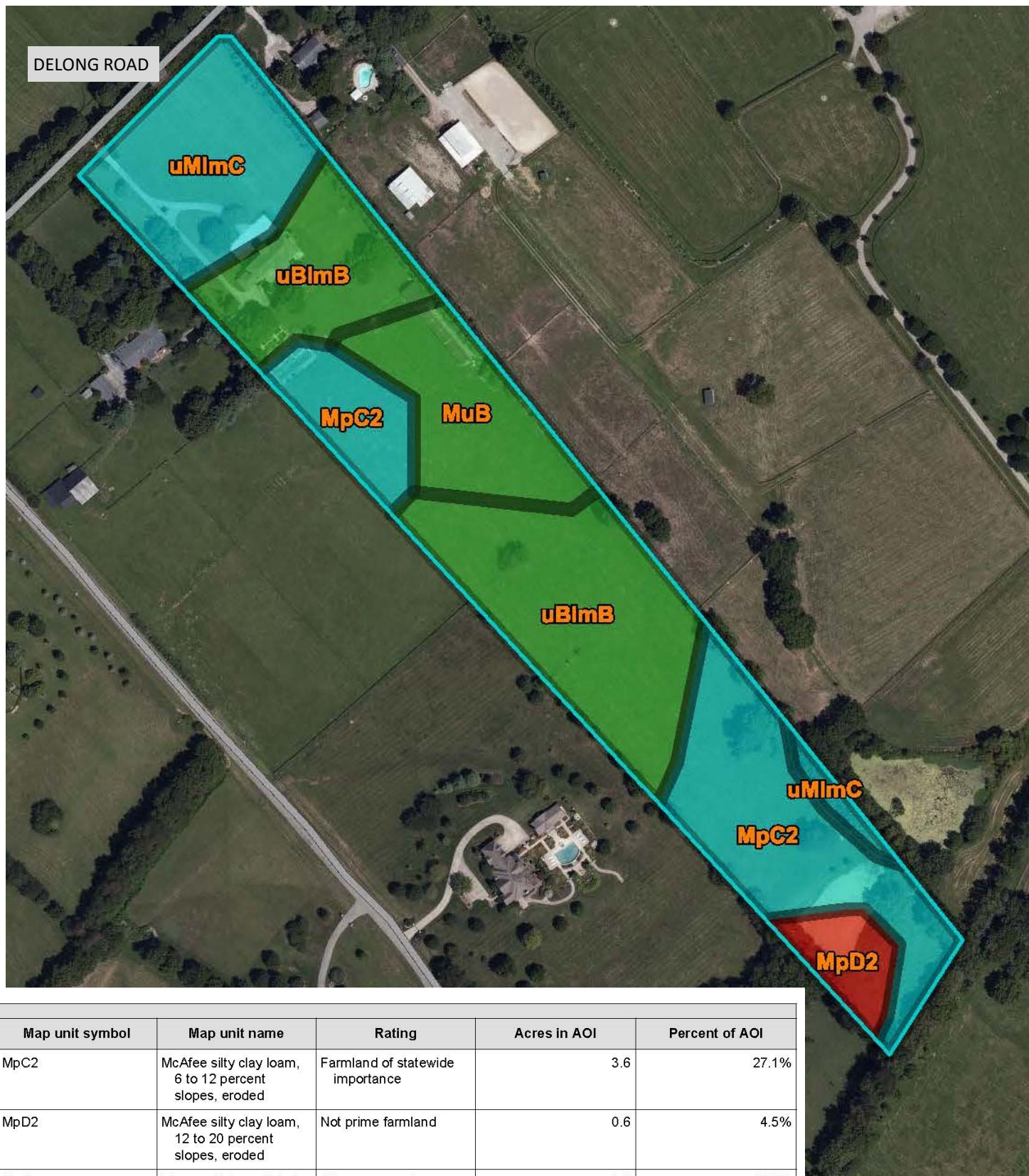
**Bill Justice**  
**(859) 255-3657**  
**Allen Kershaw**  
**(859)-333-2901**

518 East Main Street • Lexington, Kentucky 40508 • (859) 255-3657









Map unit symbol	Map unit name	Rating	Acres in AOI	Percent of AOI
MpC2	McAfee silty clay loam, 6 to 12 percent slopes, eroded	Farmland of statewide importance	3.6	27.1%
MpD2	McAfee silty clay loam, 12 to 20 percent slopes, eroded	Not prime farmland	0.6	4.5%
MuB	Mercer silt loam, 2 to 6 percent slopes	All areas are prime farmland	1.8	13.3%
uBlmB	Bluegrass-Maury silt loams, 2 to 6 percent slopes	All areas are prime farmland	4.9	36.4%
uMImC	Maury-Bluegrass silt loams, 6 to 12 percent slopes	Farmland of statewide importance	2.5	18.6%
Totals for Area of Interest			13.4	100.0%