

**4250 LEXINGTON ROAD**

**67 ± Acres**

**Paris, Bourbon County, Kentucky**  
**A division of Lynnwood Farm**



*Information contained herein is believed to be accurate but is not warranted.*

**PRICE: \$1,507,500.**



**Bill Bell**  
**(859) 621-0607**



## 17 Stall Converted Tobacco Barn



- Asphalt center aisle
- Feed room
- Hay storage



## 12 Stall Converted Tobacco Barn



- Asphalt center aisle
- Loaf
- Feed room
- Attached shed

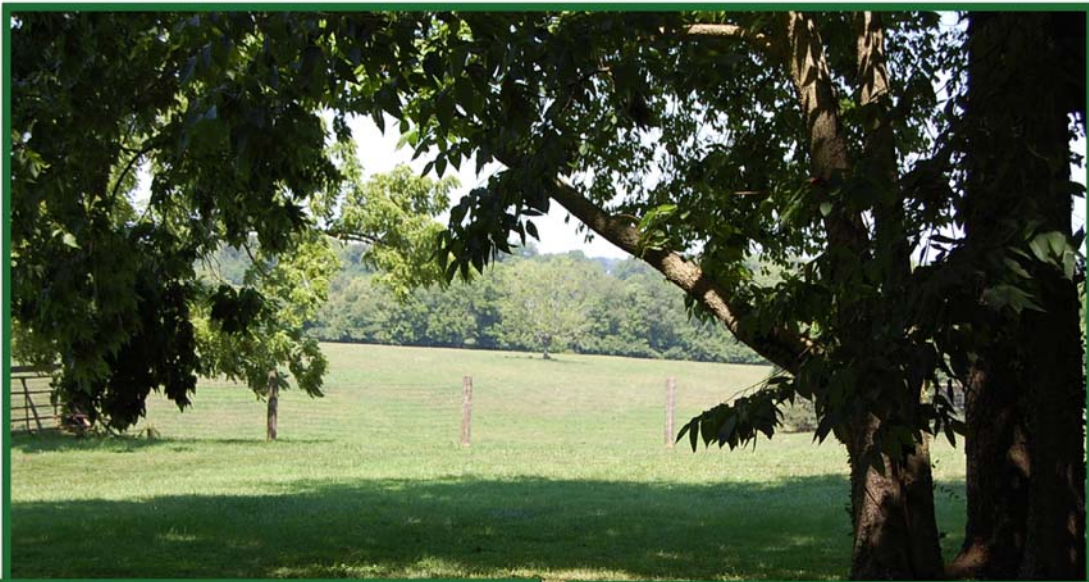




## Equipment Barn



- City water
- Wet weather spring
- Pond
- Zoned AR

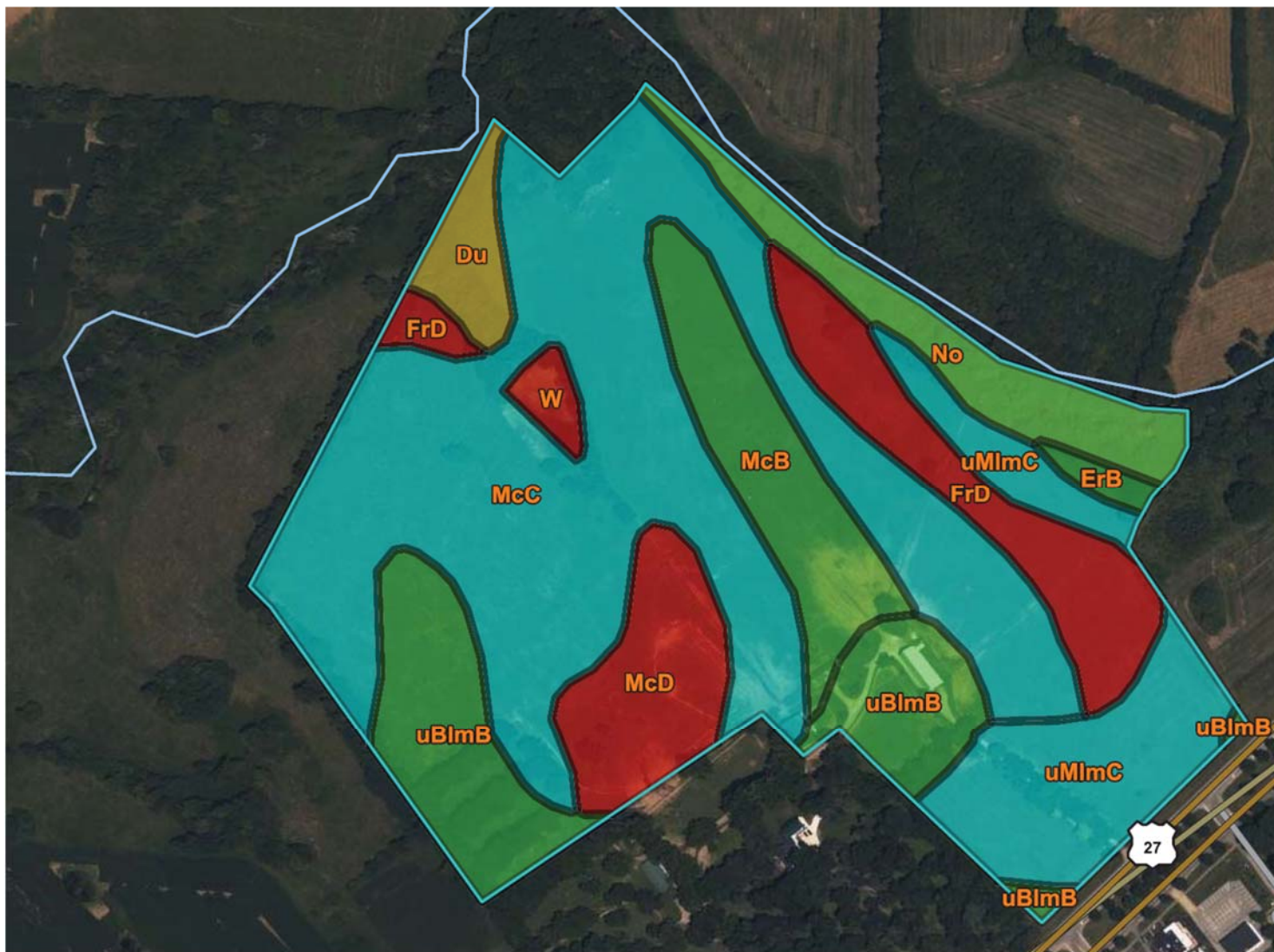


- Houston Creek runs along Northern boundary









Map unit symbol	Map unit name	Rating	Acres in AOI	Percent of AOI
Du	Dunning silty clay loam, 0 to 2 percent slopes, frequently flooded	Prime farmland if drained and either protected from flooding or not frequently flooded during the growing season	1.6	2.5%
ErB	Elk silt loam, 2 to 6 percent slopes, rarely flooded	All areas are prime farmland	0.5	0.7%
FrD	Fairmount-Rock outcrop complex, 12 to 30 percent slopes	Not prime farmland	5.5	8.6%
McB	McAfee silt loam, 2 to 6 percent slopes	All areas are prime farmland	5.2	8.1%
McC	McAfee silt loam, 6 to 12 percent slopes	Farmland of statewide importance	27.5	43.0%
McD	McAfee silt loam, 12 to 20 percent slopes	Not prime farmland	4.1	6.4%
No	Nolin silt loam, 0 to 2 percent slopes, frequently flooded	Prime farmland if protected from flooding or not frequently flooded during the growing season	3.9	6.0%
uBlmB	Bluegrass-Maury silt loams, 2 to 6 percent slopes	All areas are prime farmland	7.7	12.1%
uMImC	Maury-Bluegrass silt loams, 6 to 12 percent slopes	Farmland of statewide importance	7.3	11.4%
W	Water	Not prime farmland	0.6	1.0%
<b>Totals for Area of Interest</b>			<b>63.8</b>	<b>100.0%</b>