

THE FORMER  
DONNA MOORE FARM & HOME  
15.34 Acres

3190 Huntertown Road,  
Versailles, Woodford County, Kentucky



*Offered Exclusively By*



[www.kyhorsefarms.com](http://www.kyhorsefarms.com)

518 East Main Street, Lexington, Kentucky, 40508 (859) 255-3657



High-stepping elegance surrounds the legend of Donna Moore. She was, after all, the undisputed Queen of the Saddlebred Industry. And this property echoes that lore, in the refined and stylish 15+ acres tucked in to the desirable Woodford County landscape. The former Donna Moore Farm is not just for the Saddlebred enthusiast. This well-kept property is ideal for any equine discipline. The freshly painted concrete block barn boasts 18- (12 x 12) stalls freshly painted, well ventilated stalls each brightened with a rear window.

The barn office and tack room is lined with oak planking. The entrance of french doors is flanked with antique converted carriage lamps, harkening to a day of genteel grace. The spacious barn aisle is laden with fragrant cedar chips and topped with a luxurious tongue and groove ceiling. An enclosed adjacent aisle leads to the 200 x 50 indoor arena, illuminated by windows on both sides and large sliding doors at opposite ends. An auxiliary barn adds an additional six (10 x 10) portable stalls, with farrier and vet racks. The farm features ample turnout, with two 4-board plank fenced paddocks lining the drive to the barn. One paddock could potentially serve as an ideal grass jumping field. Two additional large fields lay beyond the barn and arena.

The residence of this beautiful horse property is gently defined from the barns and paddocks with a private entrance. Once inside the iron gates the drive wraps around the limestone accented single story custom home. Mature Maple, Birch and Magnolia trees welcome you to the home which features copper cupolas and a charming front porch with shutters, light sconces and pillars. The freshly painted interior of the home is bright and welcoming. Contrasting beams adorn the vaulted ceilings in the living room and the wood floors added in 2017 create a beautiful counterpoint to the light and airy space. The kitchen features all new appliances, a butler pantry and a counter bar perfect for visiting with friends or family. The updated light fixtures and cabinets with cheery brass handles add to the light-hearted feeling.

The home features three en suite bedrooms with ample closet space. The primary suite includes a make-up room with professional lighting, as well as the second of two attached four season solariums. The Shatner suite includes a sitting room and generous bathroom with marble counter tops. The guest suite features french doors and a custom bath with Sherle Wagner porcelain sinks and toilet.

The landscaping, beautifully manicured like a flashy 5-Gaited Saddlebred brings timeless elegance to the layout. Donna's primary client, William Shatner who played Captain Kirk on Star Trek, influenced the design. Shatner incorporated shrubs to match his Beverly Hills Estate, creating a perimeter of privacy. The statuesque hedge row separates the home from the outside world. While private in nature the property is conveniently located just minutes from Keeneland Racecourse and Bluegrass International Airport. The neighboring Double D Ranch and Crawford Farm add to the picturesque backdrop, both boasting world-class stock.

Reflective of a generation of horse people with vigor and style the former Donna Moore Farm is the ideal equine property for any discipline. And the stylish home accommodates both the entertainer and the quiet individual who delights in the simple privacy of the countryside.



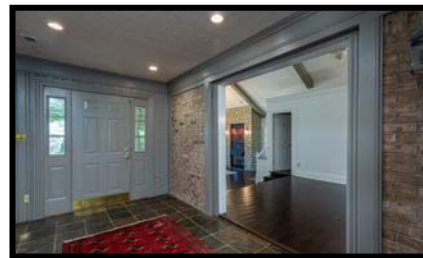


#### Sunken Living Room:

- Hardwood Floor
- Beamed Cathedral Ceiling
- Chandelier
- Stone Fireplace w/ Slate Hearth & Gas Logs
- Wet Bar w/ Brass Sink
- Under- Counter Wine & Beverage Cooler
- Ice Maker

#### Dining Area:

- Hardwood Floor
- Beamed Cathedral Ceiling
- Ceiling Fan w/ Light



#### Powder Room:

- Slate Floor
- Sherle Wagner Porcelain Hand painted Pedestal Sink.





Den:

- Wood Burning Fireplace w/ Gas Logs
- Raised Brick Hearth
- Built-in Bookshelves
- Hardwood Floor
- Ceiling Fan / light

Solarium:

Sliding Doors to:

- Den
- Deck
- Driveway
- Patio







#### Kitchen:

- Custom Cabinetry with Brass handles
- Granite Countertops
- Island with Granite Counter
- Updated Light Fixture
- Pantry Includes Wood Shelving and Custom Cabinets

#### New Appliances (2023) Include:

- Samsung Stainless Steel Built-in Double Wall Oven
- Whirlpool Stainless Steel Large Capacity Dishwasher
- Whirlpool Stainless Steel Side by Side Refrigerator
- Whirlpool Stainless Steel 2.1 Cu. Ft Microwave
- GE 5 Burner Gas Surface Stove (2018)





#### Hall Bath 1/2 Bath:

- Sherle Wagner Porcelain Hand Painted Pedestal Sink
- Tile Floor
- Makeup Vanity

#### Laundry:

- Hardwood Floor
- Washer / Dryer Closet
- Built In Cabinets





## Primary Suite



### Primary Bedroom:

- Trey Ceiling
- Crown Molding
- Luxury Plank Vinyl Floor
- Ceiling Fan / Light
- 3 Closets
- Walk In Closet w/ Professional Makeup Vanity
- Sliding Door to Private Solarium w/ Ceiling Fan / Light



### Primary Bath:

- Tile Floor
- Double Sinks
- Wood Vanity w/ Italian Tumble Marble Counter
- Whirlpool Tub
- Walk-in Shower



## William Shatner Suite



### Sitting Room:

- Wall to Wall Carpet
- Crown Molding
- Ceiling Light / Fan



### Bedroom:

- Wall to Wall Carpet
- Crown Molding
- Ceiling Light / Fan
- Double Closet



### Bathroom:

- Wood Vanity
- Tub / Shower Combo
- Makeup Vanity w/ Marble Top
- Chair Rail
- Crown Molding



## Guest Suite



### Bedroom:

- Hardwood Floor
- Trey Ceiling
- Crown Molding
- Ceiling Fan / Light

### Guest Bath:

- Tile Floor
- Crown Molding
- Whirlpool tub
- Walk In Closet



- Walk In Shower
- Wood Vanity
- Sherle Wagner Porcelain Hand painted Double Sink





Patio:

- Limestone
- Landscaped
- Wood Bench Seating



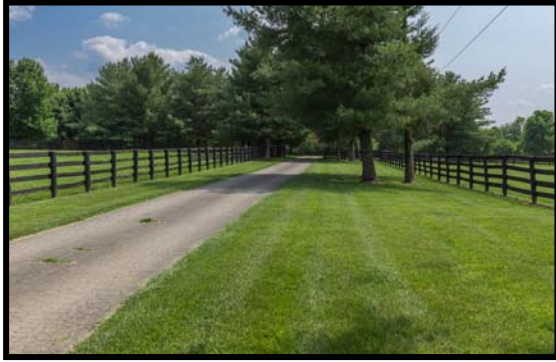
2 1/2 Car Garage:

- Utility Closet
- Built In Cabinets for Storage
- Heated





# Horse Improvements

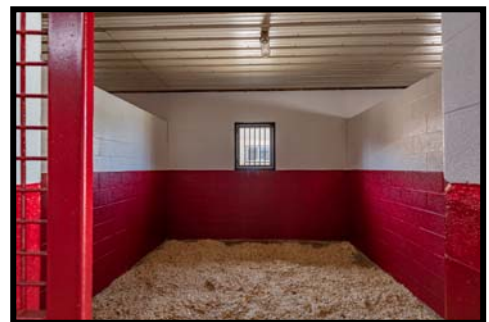


## 18 Stall Concrete Block Barn

- Stalls: 12' x 12'
- Tongue & Groove Ceiling
- Antique Carriage Lamps
- Laundry Room w/ New LG Washer & Dryer, Half Bath
- Attached 200' x 50' Indoor Arena w/ Windows Along Both Sides &
- Large Sliding Doors at Opposite Ends
- Cedar Footing



- Loft Can Accommodate Up to 1000 Bales of Hay



- The Roofline and Loft of Main Barn Were Renovated in 2015 with Morton Improvements.
- New Electrical Was Included for the Structure.
- Loft / Indoor Arena Exhaust System





**Office Tack Room**



**Wash Rack & Grooming Stall**

**Indoor Arena**



**Lower Barn**

- 130' x 30'
- 6- 10 x 10 Stalls (With Room for Additional Stalls)
- Plenty of Storage



- Four Paddocks & Fields
- Four Board Plank & Wire Fencing





The landscaping, beautifully manicured like a flashy 5-Gaited Saddlebred brings timeless elegance to the layout. While private in nature the property is conveniently located just minutes from Keeneland Racecourse and Bluegrass International Airport. The neighboring Double D Ranch and Crawford Farm add to the picturesque backdrop, both boasting world-class stock.

Reflective of a generation of horse people with vigor and style the former Donna Moore Farm is the ideal equine property for any discipline. And the stylish home accommodates both the entertainer and the quiet individual who delights in the simple privacy of the countryside.

*Offered Exclusively By*



**PRICE: \$1,850,000.**

**Agent: Bill Justice**

**859-255-3657**

**Bill Bell**

**859-621-0607**

