

A Portion of
OAK LODGE FARM, USA
710 Jackstown Road
Paris, Bourbon County, Kentucky
96 +/- Acres



Adjoining world-renown Adena Springs and across the road from Brandywine Farm, this turn-key horse farm is known for producing stake horses including Medaglia d'Oro. Improvements include a very nice 1.5 story home, 4 horse barns with 48 stalls, 3 large run-in sheds, and a nice office with full bath.

Seller to retain his home and roughly 5+ acres—flexible on lot line.

Information contained herein is believed to be accurate but is not warranted.

Offered Exclusively By



www.kyhorsefarms.com

518 East Main Street • Lexington, Kentucky 40508 • (859) 255-3657



Built in 2000, this wonderful 2,185 square foot home features brick sidewalks, ash floors, and extensive crown molding.



The first floor contains a large eat-in kitchen with cherry cabinets, living room with fireplace, primary bedroom with fireplace and bath with adjoining nursery/ den, laundry room and powder room.

The second level contains 2 bedrooms and one full bath.



Horse Improvements



Front Barn

- 14 stalls measuring 11' x 12'
- Feed room
- 3 open bays
- 19' tongue and grove aisleway

Middle Barn

- 13 stalls measuring 11' x 11.5' with rear windows
- Skylights
- Middle open bay

3 Concrete block run-in sheds with hay storage (one has a vet stall)

Foaling Barn

- 8 stalls measuring 12' x 12' plus 1 stall measuring 12' x 14'
- Concrete block
- Half bath
- Feed/tack room

Yearling Barn

- 12 stalls measuring 12' x 12' with rear windows
- 13.5' aisle
- Concrete block

NOTE: Adjacent 5-horse Kraft walker





Board and batten office with full bath and kitchen consisting of approximately 835 SF.





Information contained herein is believed to be accurate but is not warranted.

Offered Exclusively By

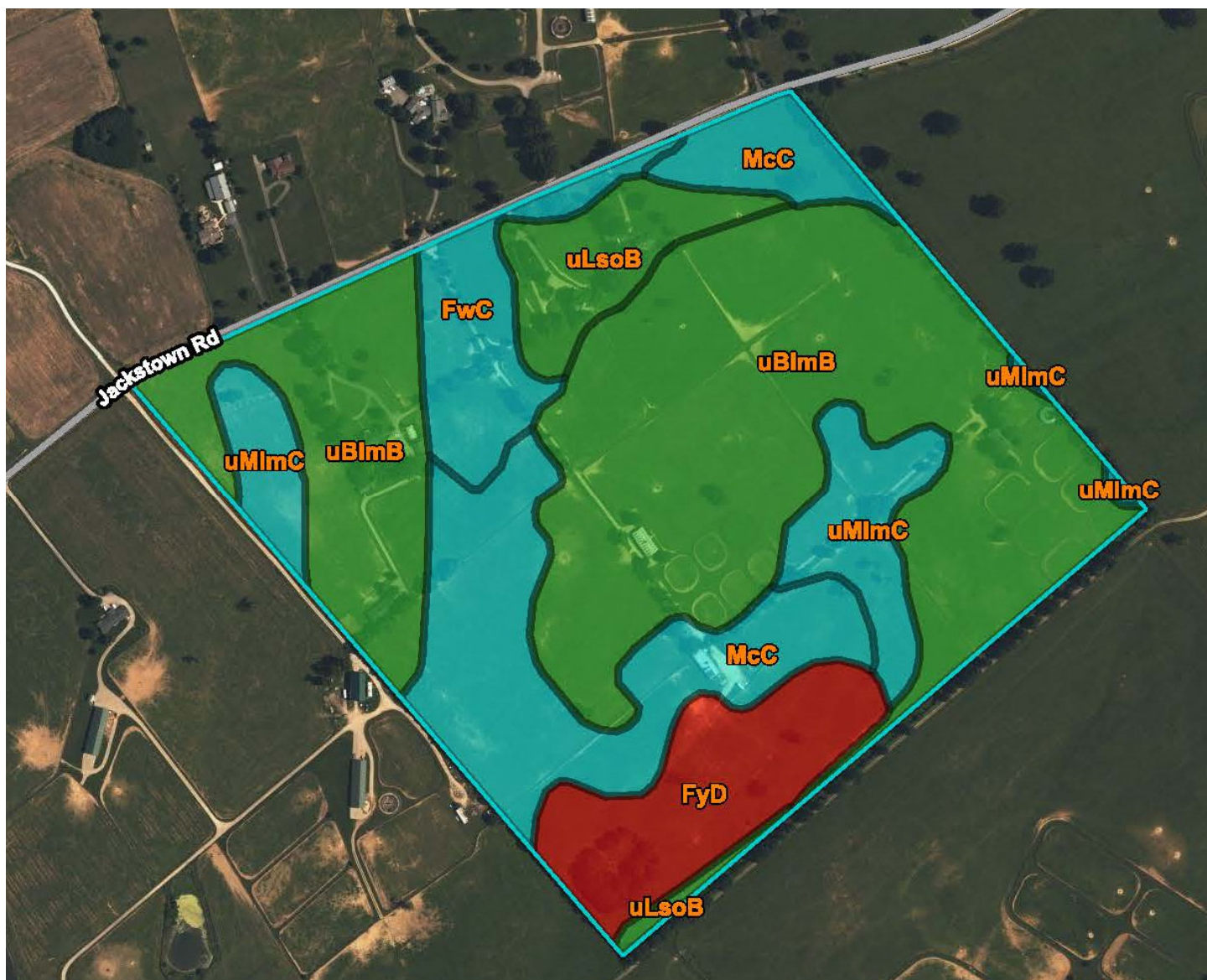
PRICE: \$2,550,000.



**Agent: Bill Justice
(859) 255-3657**

**www.kyhorsefarms.com
518 East Main Street • Lexington, Kentucky 40508 • (859) 255-3657**





Map unit symbol	Map unit name	Rating	Acres in AOI	Percent of AOI
FwC	Faywood silt loam, 6 to 12 percent slopes	Farmland of statewide importance	6.1	6.2%
FyD	Faywood silty clay loam, 12 to 20 percent slopes	Not prime farmland	9.4	9.5%
McC	McAfee silt loam, 6 to 12 percent slopes	Farmland of statewide importance	18.3	18.4%
uBlmB	Bluegrass-Maury silt loams, 2 to 6 percent slopes	All areas are prime farmland	51.4	51.9%
uLsoB	Lowell-Sandview silt loams, 2 to 6 percent slopes	All areas are prime farmland	6.0	6.0%
uMImC	Maury-Bluegrass silt loams, 6 to 12 percent slopes	Farmland of statewide importance	7.9	8.0%
Totals for Area of Interest			99.0	100.0%