



Blue Grass Trust Historical Home

231 W. KY 36
Cynthiana, Harrison County, Kentucky

A Piece of Kentucky History, Perfectly Preserve

27.63 Acres

\$1,100,000



Agent:

Cathy Davis
859-255-3657
cathy.stevens.davis@gmail.com

kyhorsefarms.com

518 East Main Street
Lexington, Kentucky 40508
859-255-3657





A Must-See to Believe!

Welcome to Poplar Hall Farm, a Blue Grass Trust historic home nestled on 27 pristine acres. Originally built in 1822 and known as the John William Kimbrough House, this impeccably maintained estate has been beautifully restored, preserving its rich history while adding modern comforts.





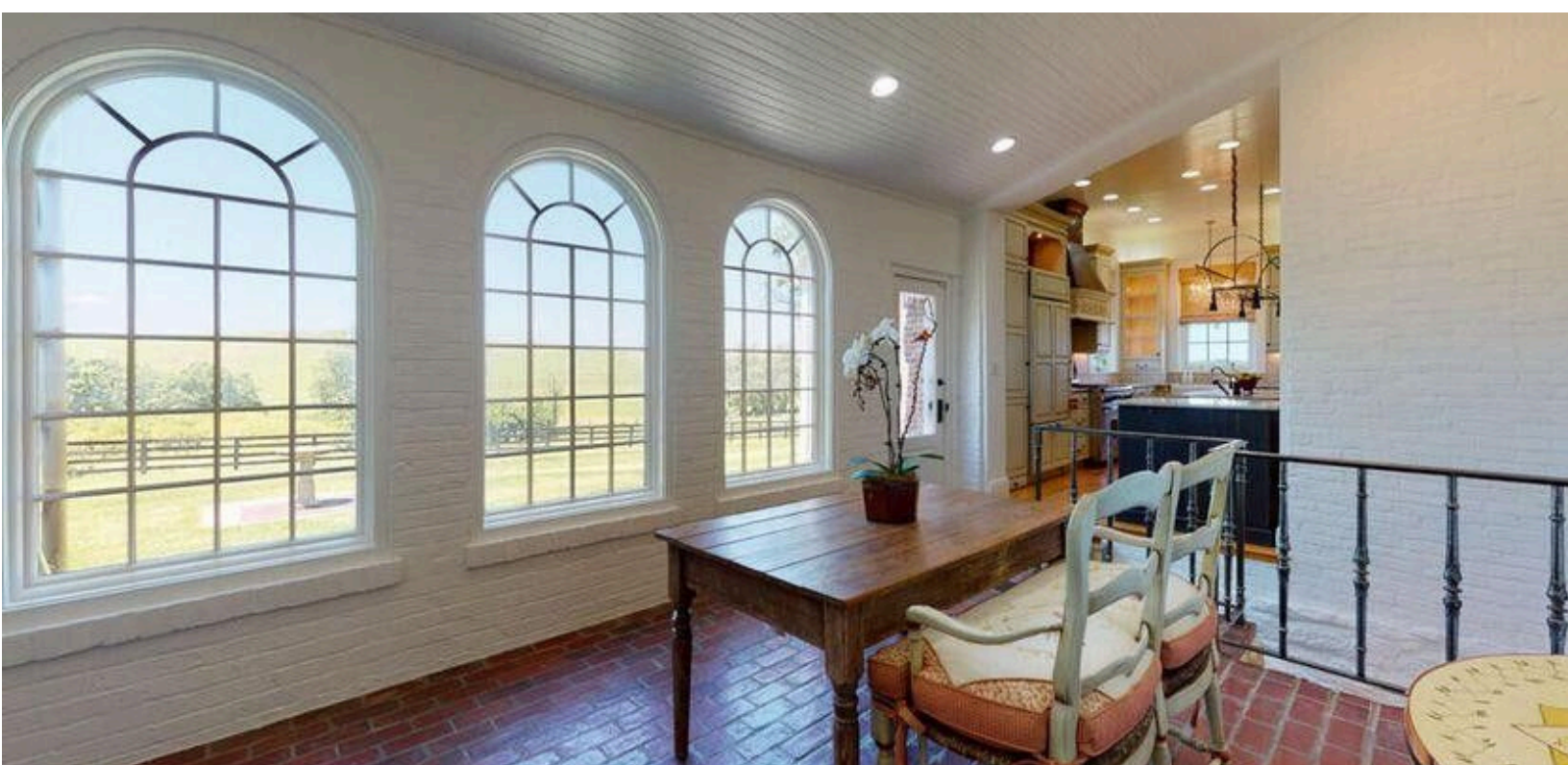
Step inside and be greeted by soaring 14-foot ceilings, original hardwood floors, and multiple working gas fireplaces. Elegant chandeliers, abundant closet space, and exceptional natural light from grand windows add warmth and sophistication throughout the home.

The custom-designed kitchen is a chef's dream, featuring a large island, 6-burner gas range, Sub-Zero refrigerator, and granite and stainless-steel countertops — all blending style and functionality seamlessly.





The spacious layout includes a stunning foyer, elegant dining room, comfortable living room, and a stately office with floor-to-ceiling bookshelves. With five bedrooms and three tastefully renovated modern bathrooms, the home offers ample space for family and guests.





Recent updates include new gas and water lines from the house to the road, completed in spring 2025, ensuring peace of mind for years to come.


All this, just a short walk from downtown Cynthiana's shops and restaurants.



Attention to detail is the hallmark of Poplar Hall Farm — a rare opportunity to own a piece of history with timeless elegance and modern comfort.





|  Boundary 27.51 ac

SOIL CODE	SOIL DESCRIPTION	ACRES	%	CPI	NCCPI	CAP
ErB	Elk silt loam, 2 to 6 percent slopes, rarely flooded	8.65	31.44	0	83	2e
FyC2	Faywood silty clay loam, 6 to 12 percent slopes, eroded	6.09	22.14	0	56	3e
uLsoB	Lowell-Sandview silt loams, 2 to 6 percent slopes	4.58	16.65	0	60	2e
FyD2	Faywood silty clay loam, 12 to 20 percent slopes, eroded	3.28	11.92	0	51	4e
uLfc	Lowell-Faywood silt loams, 6 to 12 percent slopes	3.2	11.63	0	56	3e
ErC	Elk silt loam, 6 to 12 percent slopes, rarely flooded	1.28	4.65	0	81	3e
MsD2	McAfee silt loam, 12 to 20 percent slopes, eroded	0.43	1.56	0	52	4e
TOTALS		27.51(*)	100%	-	65.66	2.65

(*) Total acres may differ in the second decimal compared to the sum of each acreage soil. This is due to a round error because we only show the acres of each soil with two decimal.