



GLENARY FARM

407 COUNTRY LANE

Frankfort, Franklin County, Kentucky

95.51 +/- Acres



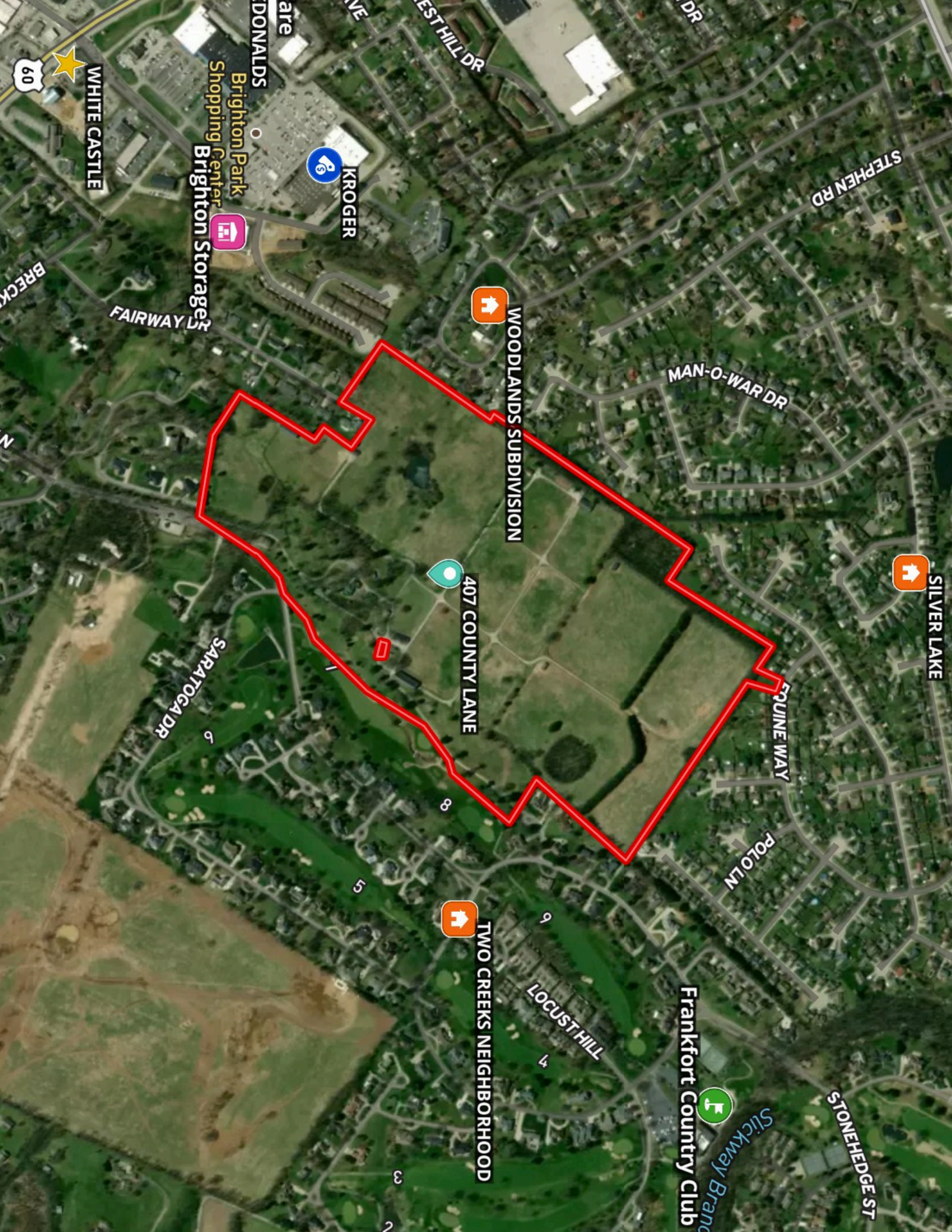
Glenary Farm has been a cornerstone of Central Kentucky's horse industry for generations. Under the stewardship of the May, Patterson, Plattner family for over 80 years, it has produced decades of equine success while also shaping the local community through the development of Two Creeks.

Glenary Farm represents a prime development opportunity. Surrounded on all sides by established neighborhoods, including Two Creeks and Silver Lake, it offers a seamless transition for residential growth. With equine facilities already in place, a buyer can generate income in the short term while executing their long-term development vision.

The focal point of the farm, the main residence, built in 1912, showcases Mediterranean architectural style rare to this region. Its carefully chosen color palette and thoughtful design give it an enduring sense of place, unmatched by other homes of this style in Central Kentucky.

Designed by horsemen, the farm's layout combines tradition with functionality: two solid barns, fenced paddocks with automatic waterers, multiple run-in sheds, employee housing, and a workshop. This infrastructure allows Glenary to continue as an equine operation immediately, should the buyer wish.

For generations, Glenary Farm has been a family legacy. Now, the opportunity exists to write the next chapter—make it yours.



STEPHEN RD

STONEHEDGE ST

Frankfort Country Club

Slickway Branch

LOCUST HILL

TWO CREEKS NEIGHBORHOOD

POLO LN

EQUINE WAY

SILVER LAKE

MAN-O-WAR DR

WOODLANDS SUBDIVISION

407 COUNTY LANE

KROGER

Brighton Park
Shopping Center
Brighton Storage

FAIRWAY DR

SARATOGA DR

WHITE CASTLE

60



GLENARY VIEW OF THE 8TH GREEN AT FRANKFORT COUNTRY CLUB





BROODMARE BARN

YEARLING BARN









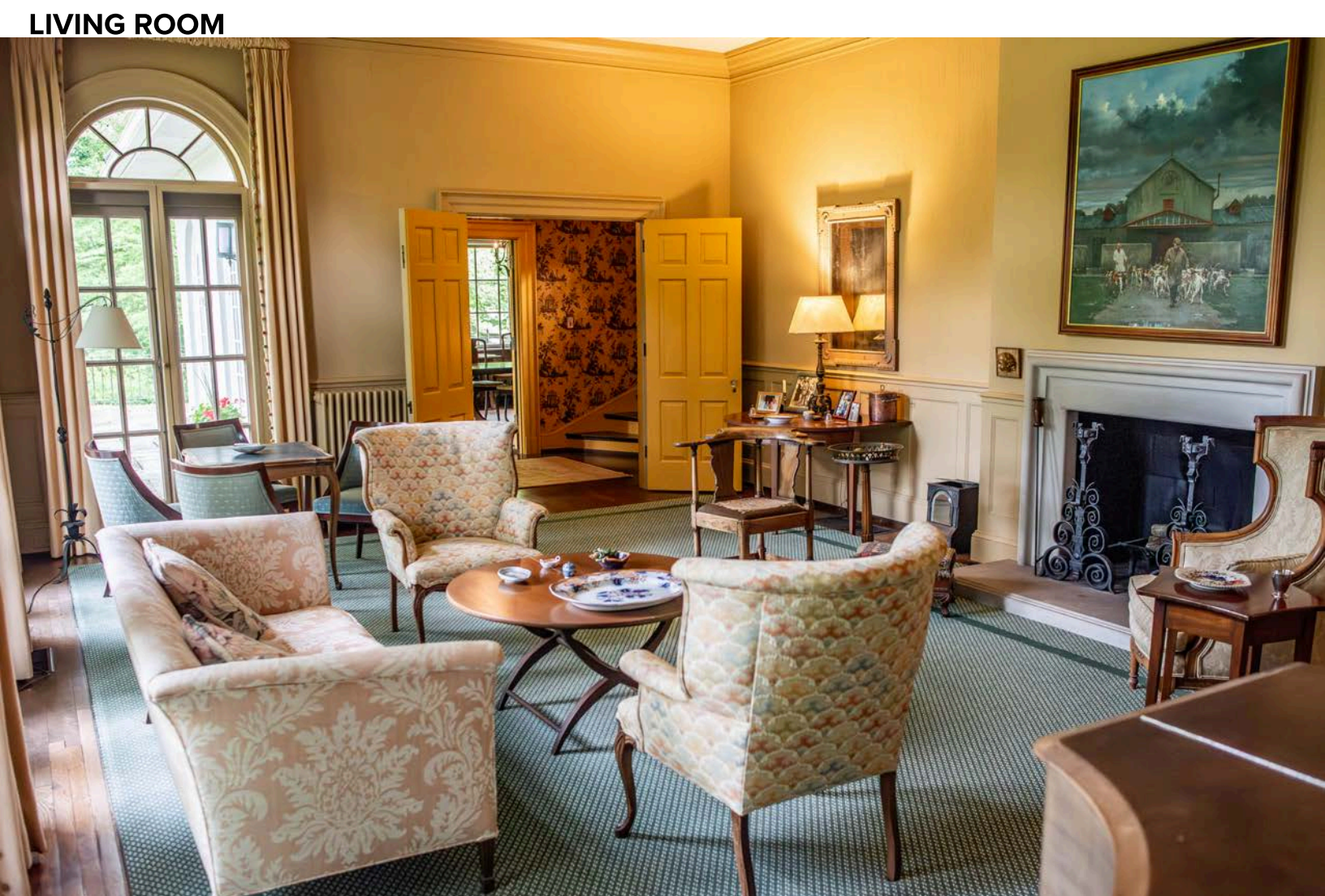
MAIN RESIDENCE

LIBRARY

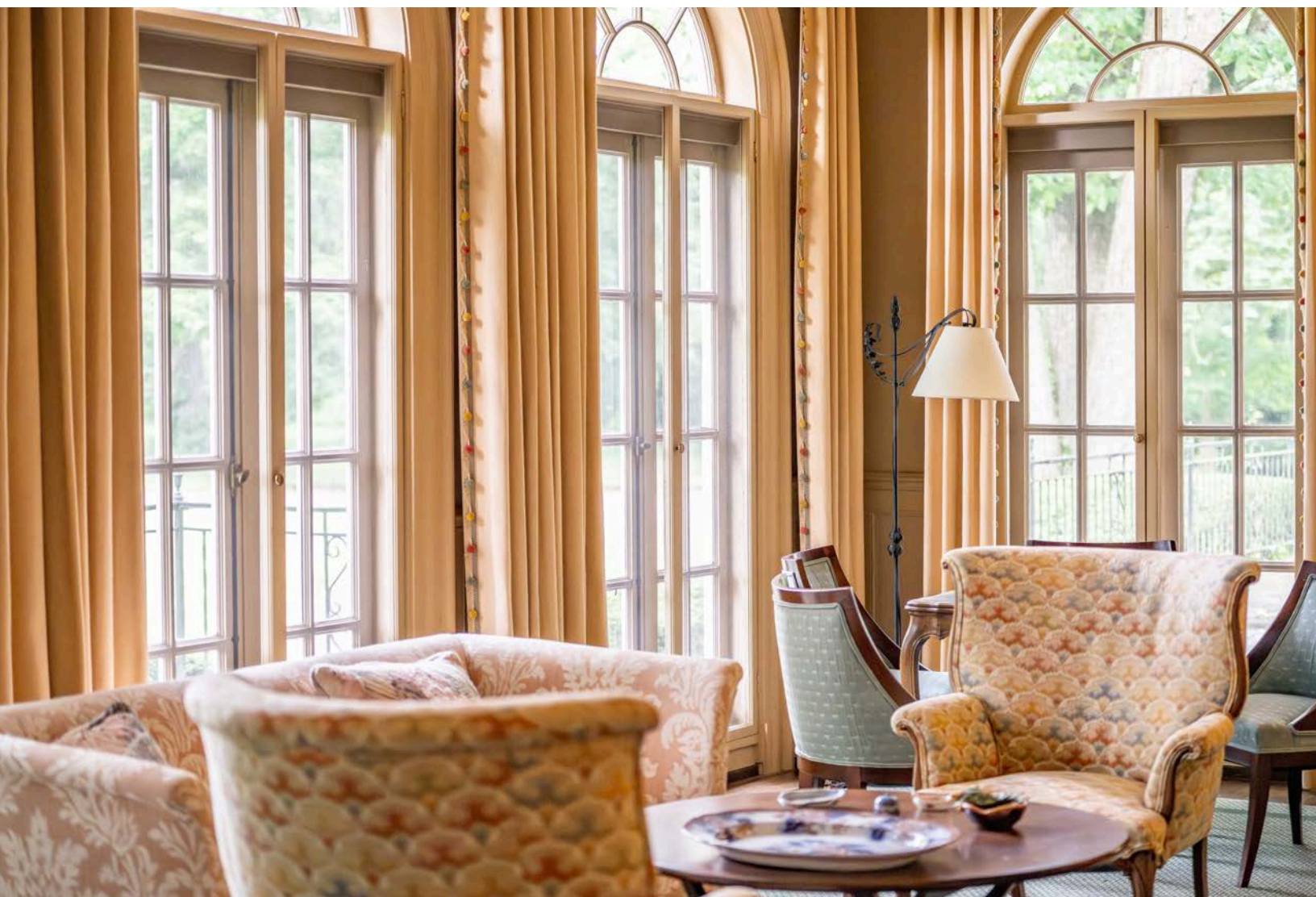




DINING ROOM



LIVING ROOM





FORKS of the ELKHORN BAPTIST CHURCH '1788'

OFFICE



Historic House

In this stone house, on a chilly February day in 1788, was held the first Preaching Service of the Forks of the Elkhorn Baptist Church, one of the earliest congregations in Kentucky. William Hichman, the pioneer preacher who conducted the service, writes of the meeting: "Almost the whole inhabitants came, I suppose about thirty whites and a few blacks... it was a blessed day." Even now, for in those times, Indians were still a menace, two members of the newly forming congregation having been killed a few weeks earlier, while shearing sheep at their home in Quind's Bottom, a few miles from here.

(Excerpt from an historic account published in the Courier-Journal)

407 COUNTRY LANE
Frankfort, Franklin County, Kentucky
95.51 +/- Acres



407 COUNTRY LANE

Frankfort, Franklin County, Kentucky

95.51 +/- Acres



McC	McAfee silt loam, 6 to 12 percent slopes	Farmland of statewide importance	32.2	36.6%
McD	McAfee silt loam, 12 to 20 percent slopes	Not prime farmland	1.4	1.6%
uBlmB	Bluegrass-Maury silt loams, 2 to 6 percent slopes	All areas are prime farmland	13.8	15.7%
uLbIB	Lowell-Bluegrass silt loams, 2 to 6 percent slopes	All areas are prime farmland	0.2	0.3%
uLFC	Lowell-Faywood silt loams, 6 to 12 percent slopes	Farmland of statewide importance	9.6	10.9%
uMImC	Maury-Bluegrass silt loams, 6 to 12 percent slopes	Farmland of statewide importance	30.7	34.9%
Totals for Area of Interest			87.9	100.0%



Offered Exclusively By:

\$6,250,000.

kyhorsefarms.com

518 East Main Street
Lexington, Kentucky 40508
859-255-3657



Information contained herein is believed to be accurate but is not warranted.

Agents:

Bill Justice
859-255-3657
bcjustice@icloud.com

Allen Kershaw
859-333-2901
akershawjre@aol.com

Bo Goodman
859-509-0582
bo@mtbrilliant.com